

GIFTED/TALENTED PROGRAMS

Parent's Guide to the Otis-Lennon School Ability Test, Eighth Edition (OLSAT-8)



AGENDA

- ✓ Present an overview of the OLSAT-8
- ✓ FAQs about OLSAT-8 Identification
- ✓ Provide parents with information about how you can prepare your child to take the OLSAT-8

FAQS

Q. Why administer the OLSAT Districtwide?

A. Analysis of 2009 pilot data indicates that this assessment supports the District's goal for the Office for Civil Rights (OCR) to address the disproportionate number of underrepresented student populations and identify students who may be overlooked in the referral process.

FAQS

Q. Who will be tested?

A. All 2nd graders, including students with disabilities and English Learners (ELs). In most cases, students will be tested by their classroom teacher.

STUDENTS EXEMPT

Students who are exempt include:

- a) Students who take the CAPA.
- b) Students previously identified as gifted in the Intellectual Ability Category.
- c) Students whose parents have requested non-participation.
- d) Students who have been retained.
- e) Students who have been pre-exposed.

ENGLISH LEARNERS

- Participating second grade **English Learners (EL)** may be given directions using their determined primary language.
- Remember, each test item may be read only **once**, whether in English or Spanish (or in another language).

NO ACCOMMODATIONS OR MODIFICATIONS

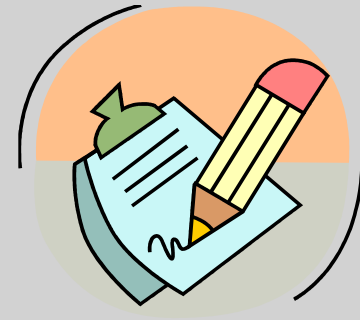
Due to assessment norms, the following accommodations will invalidate OLSAT test results. Thus, these scores will not be considered for eligibility for gifted identification:

- 1) Any modifications made to the content of the assessment.
- 2) Directions read more than once.
- 3) Allowing extended time.



OLSAT PARENT LETTER

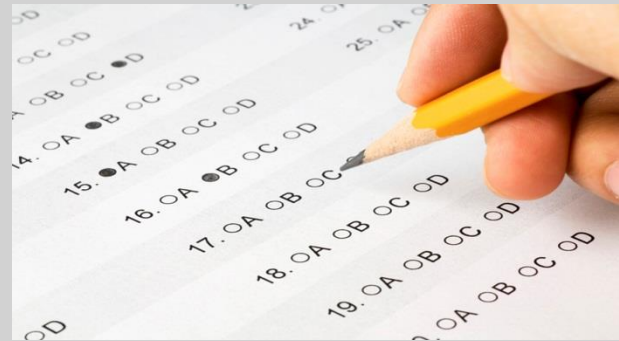
All parents of 2nd grade students will be receiving an Informational Letter from your school regarding the OLSAT-8 testing.



IMPORTANT: ONLY sign and return the letter to the school if you do **NOT** want your child to participate in the OLSAT testing. Otherwise, keep the letter for your records.

FAQS

Q. Is the OLSAT an
IQ test?



A. **No.** The OLSAT is an
achievement test.

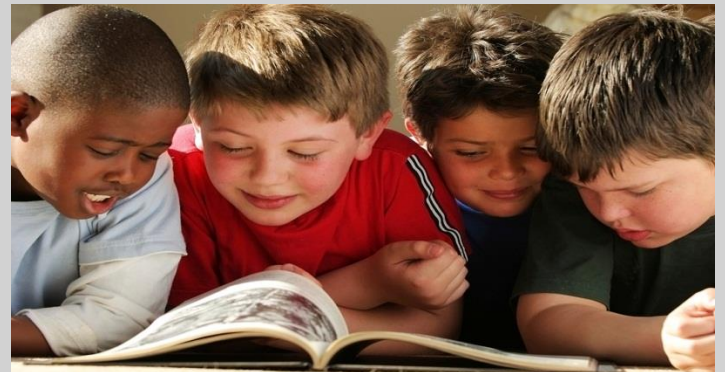
OTIS-LENNON SCHOOL ABILITY TEST, EIGHTH EDITION (OLSAT-8)

OLSAT-8 is a
**nationally standardized,
norm referenced,**
group administered measure of cognitive
abilities that relate to a student's ability
to learn and succeed in school.

WHAT DOES THE OLSAT-8 MEASURE?

A. The OLSAT measures abilities related to School Success.

- Detecting likenesses and differences
- Recalling words and numbers
- Defining words
- Following directions
- Classifying
- Establishing sequence
- Solving arithmetic problems
- Completing analogies



HOW ARE THESE PROCESSES MEASURED?

Verbal

- Verbal Comprehension
 - Following Directions
- Verbal Reasoning
 - Aural Reasoning
 - Arithmetic Reasoning

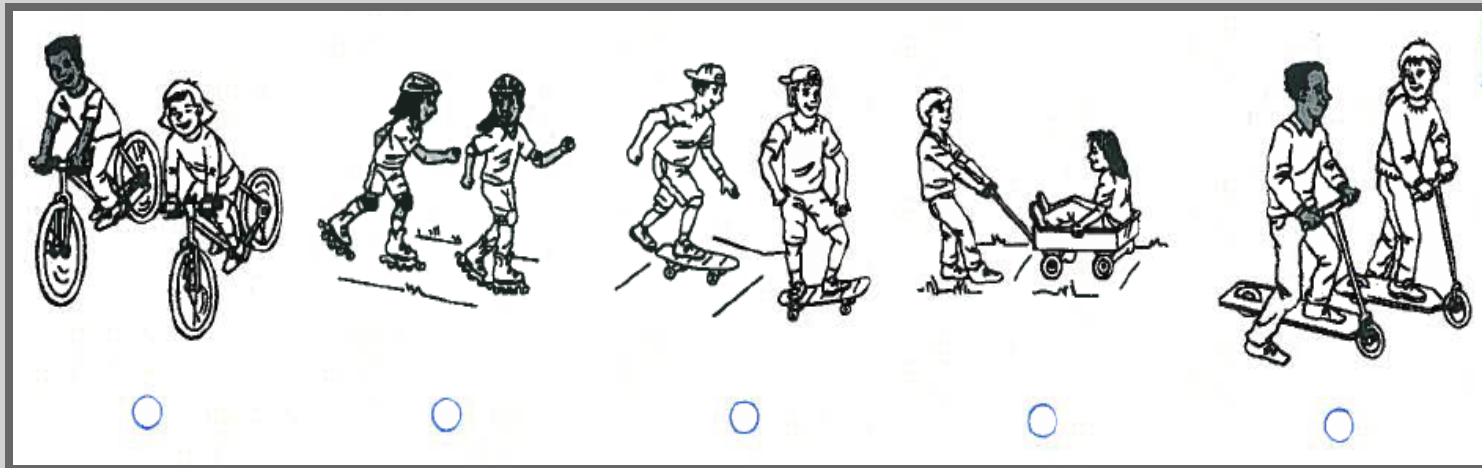
Non-Verbal

- Pictorial Reasoning
 - Picture Classification
 - Picture Analogies
- Figural Reasoning
 - Figural Classifications
 - Figural Analogies
 - Pattern Matrix
 - Figural Series

NON VERBAL: PICTURE REASONING

Picture Classification

- Ability to determine which picture in a set of five pictures does not belong. (unifying concept)

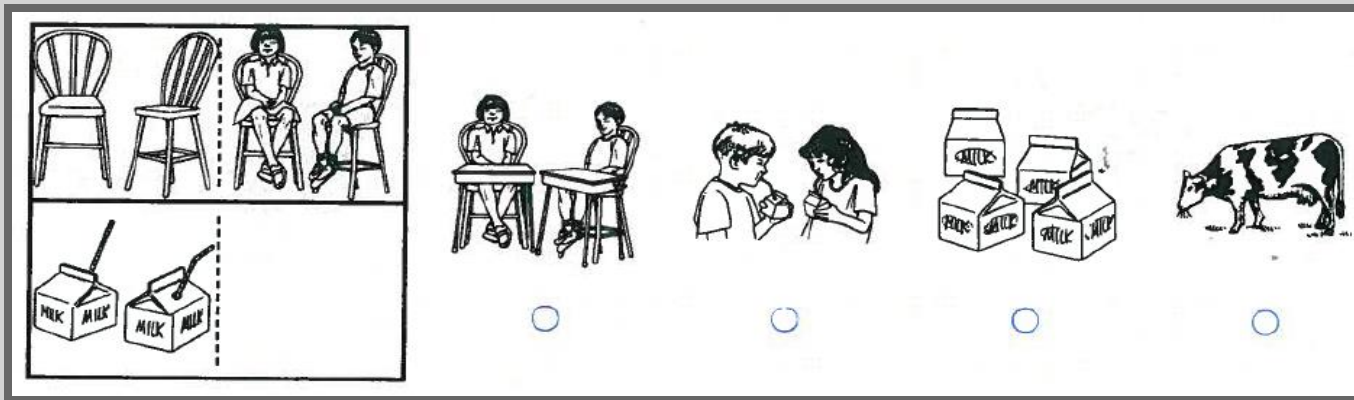


Sample item is confidential and proprietary

NON VERBAL: PICTORIAL REASONING

Picture Analogy

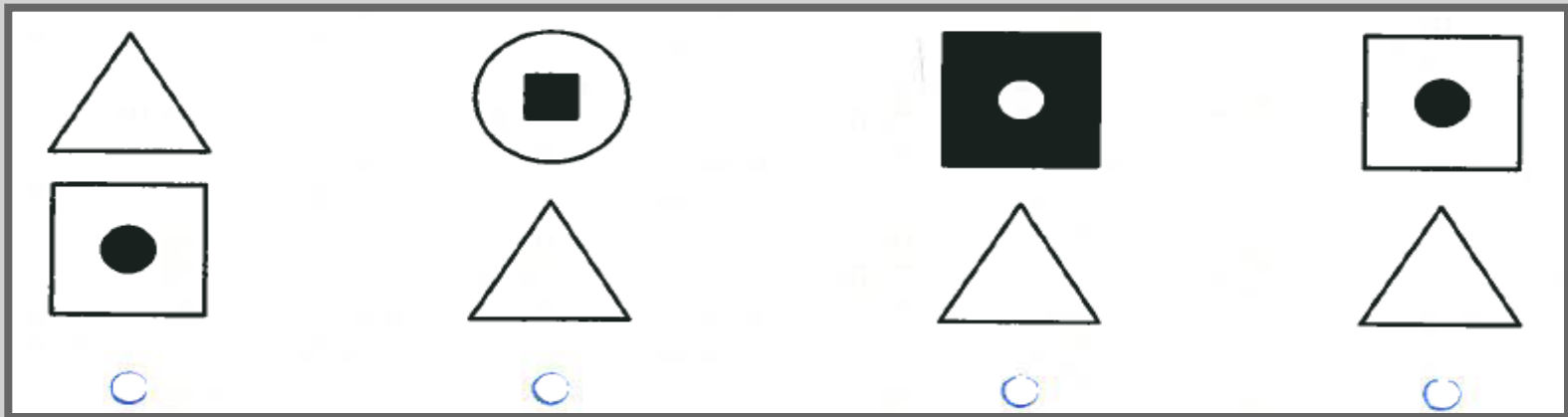
- Ability to infer the relationship between two pictures and select the picture that is related to the stimulus picture in the same way.



Sample item is confidential and proprietary

VERBAL COMPREHENSION: FOLLOWING DIRECTIONS

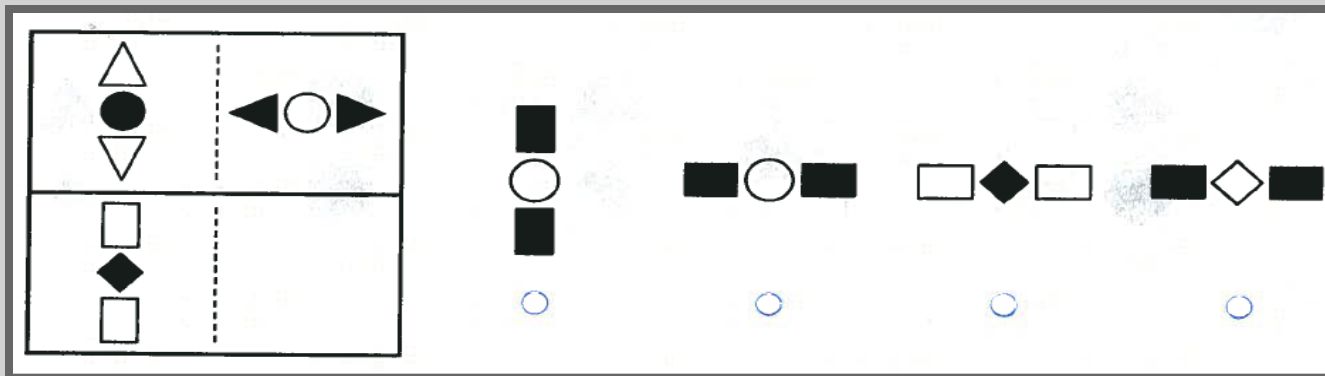
- Ability to match verbal description to pictorial representation (e.g. above, between, next to, etc.).



Sample item is confidential and proprietary

FIGURAL REASONING: FIGURE ANALOGIES

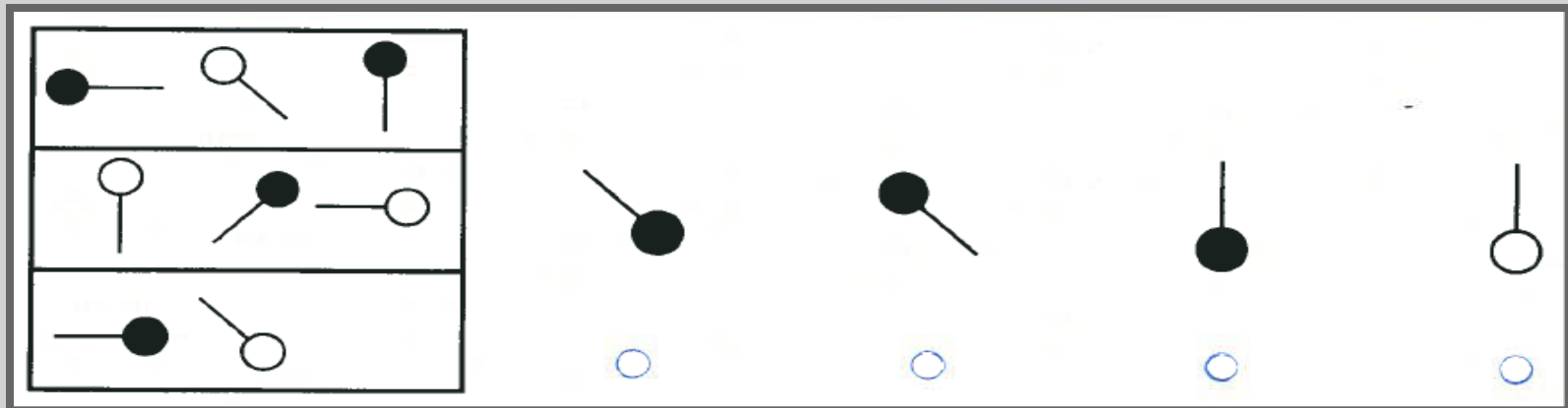
- Ability to infer a relationship between a pair of geometric shapes and select the shape that is related to the stimulus in the same way.



Sample item is confidential and proprietary

FIGURAL REASONING: PATTERN MATRIX

- Ability to supply missing element in a matrix of geometric shapes (relationship of figures).



Sample item is confidential and proprietary

FAQS

Q. Why is the District not testing all second graders with an IQ test?

A. 1) An IQ test must be administered by an insured and credentialed School Psychologist.

2) The cost of administering an IQ test to all **45,771** second grade students within the District would eliminate the entire GATE budget which would not be cost effective.

3) The identification rate for the Intellectual Category tends to be statistically low without providing pre-referral screening for potential candidates.

4) The OLSAT data can also function as part of pre-referral evidence for students being considered for the Intellectual Category.

INFORMATION v

Q. What gifted identification category are the second graders testing for with the OLSAT?



- a) Intellectual Category
- b) Specific Academic Ability Category
- c) High Achievement Category
- d) Creative Ability Category
- e) Visual Arts Ability Category
- f) Performing Arts Ability Category
- g) Leadership Ability Category

ANSWER IS...

**C. The High Achievement Ability
Category**



FAQS

Q. If my child is identified gifted in the High Achievement Category, does he/she need to re-apply for the category next year?

A. No. As with all gifted categories in the LAUSD, once a student is identified gifted, the gifted label will remain with the student for the duration of his/her enrollment at LAUSD.

FAQS

Q. Can my child be identified as highly gifted on the OLSAT?

A. **No.** Again, the OLSAT is an achievement test (High Achievement Ability Category).

Remember: A student can only be identified highly gifted in the Intellectual Ability Category.

FAQS

Q. If my child does not meet the criteria on the OLSAT, can he/she still be referred in the Intellectual Category?

A. **Yes.** However, all students still need to be thoroughly screened by the on-site Screening Committee for appropriateness of referral.

FAQS

Q. What are the test administration dates?

A. Schools may select a testing date within one of two windows:

March 11-12, 2015

and/or

March 18-19, 2015



FAQS

Q. Will there be a **make-up** testing date?

A. Yes.

March 24, 2015

FAQS

Q. How will parents be informed?

A. An informational letter (English and Spanish) is to be sent to parents from the school site. In addition, there will be four informational sessions for parents from 6:30 p.m. – 7:30 p.m. on the following dates (parents only need to attend **ONE** of the following meetings):

- February 2, 2015 — Peary MS (ESC South)
- February 5, 2015 — Grant HS (ESC North)
- February 9, 2015 — Nightingale MS (ESC East)
- February 12, 2015 — Loyola Village ES (ESC West)

HELP FOR YOUNG TEST-TAKERS

- The OLSAT8 has several features designed to make your child feel more comfortable with test-taking and to guide your child through the test.
 - Sample items for each section of the test
 - Use of pictures throughout the test booklet
 - Each subtest and item clearly marked
 - Question prompts dictated by the teacher

HOW TO PREPARE YOUR CHILD TO TAKE THE OLSAT8

❖ Things your child can do:



- ✓ **REST**...Get a good night's sleep before taking the OLSAT-8.
- ✓ **EAT**...A good breakfast on the morning of the OLSAT-8 is important.
- ✓ **LISTEN**...Listen carefully to the directions the teacher gives and follow them exactly.
- ✓ **TRY**...Do your best. Students are not expected to know the answer to every question. Some questions may seem hard, but students should keep trying and not give up.

HOW TO PREPARE YOUR CHILD TO TAKE THE OLSAT-8

❖ Things YOU can do:



- ✓ **DISCUSS**...Help your child understand that the OLSAT-8 provides a chance to show what you know and how the teacher can best help you learn.
- ✓ **SUPPORT**...Make sure your child understands that the OLSAT-8 scores simply give information and will not be used to punish students.
- ✓ **RELAX**...Reassure your child about the test-taking experience. Students who are calm and sure of themselves do better.

FAQS

Q. When will schools receive the results?

A. Student results are “estimated” to be released on **April 23, 2015**. Test results are mailed directly to each school.



FAQS

Q. We received the score reports.

Where should I look for the qualifying score?



FAQS

- A. The **Total Age-Based Percentile Score** (Age PR-S) is located in the top left box of the student report (see next slide).

FAQS

Q. How is the OLSAT used to determine eligibility for High Achievement?

THERE ARE TWO WAYS TO QUALIFY FOR THE HIGH ACHIEVEMENT CATEGORY BASED ON THE OLSAT-8 SCORES:

- ☐ Students who receive a Total Age-Based Percentile Score of **95** percent or above.
- ☐ **Low income students*** who receive a Total Age-Based Percentile Score between **90 to 94** percent.

***The poverty level for 2014 in the United States was set at \$23,850 (total yearly income) for a family of four.**
2014 HHS Poverty Guidelines U.S. Department of Health & Human Services, Accessed: January 2014

THESE 2ND GRADERS ARE IDENTIFIED AS *GIFTED...*

NOW WHAT?



NEXT STEPS



Gifted identification is not the final goal of this process.

- Identification is the tool that allows teachers to make instructional and programming decisions to best meet the academic and social-emotional needs of students.
- The identification process has little value without appropriate clustering and differentiated instruction to follow.

COMMENTS & QUESTIONS?



STAY CONNECTED TO LAUSD GIFTED/TALENTED PROGRAMS



achieve.lausd.net/gate



follow us on
twitter

[TWITTER.COM/LAUSDGATE](https://twitter.com/LAUSDGATE)



[www.facebook.com/
LAUSDGATE](http://www.facebook.com/LAUSDGATE)

