

# The Principal's Corner

Toluca Lake Elementary

Mr. Jeffrey Daniel, Principal

November 2019



## Do we have your number(s)?

If you have not received a phone call from Toluca Lake Elementary in the last few weeks, then we don't have your correct phone number.

Please call or come to the school office to update today.

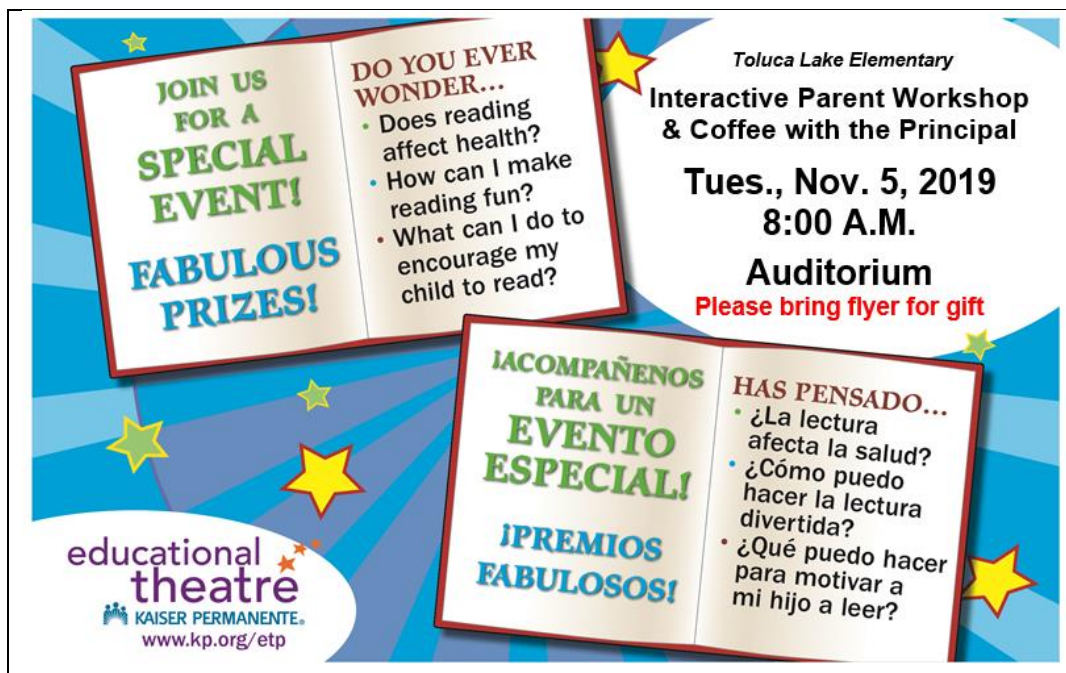
**Your child's safety depends on it!**



**We need your help** to beat the other schools in Local District Northeast!

**Toluca Lake Elementary is in a competition to get to 50% of families registered on the Parent Portal by Nov. 30th.** (We are currently at 34%)

**Register today! @ <https://parentportalapp.lausd.net/parentaccess/>**



**JOIN US FOR A SPECIAL EVENT! FABULOUS PRIZES!**

**DO YOU EVER WONDER...**

- Does reading affect health?
- How can I make reading fun?
- What can I do to encourage my child to read?


**Toluca Lake Elementary**  
**Interactive Parent Workshop & Coffee with the Principal**  
**Tues., Nov. 5, 2019**  
**8:00 A.M.**  
**Auditorium**  
**Please bring flyer for gift**

**educational theatre**  
 KAISER PERMANENTE  
[www.kp.org/etp](http://www.kp.org/etp)

**¡ACOMPÁÑENOS PARA UN EVENTO ESPECIAL! ¡PREMIOS FABULOSOS!**

**HAS PENSADO...**

- ¿La lectura afecta la salud?
- ¿Cómo puedo hacer la lectura divertida?
- ¿Qué puedo hacer para motivar a mi hijo a leer?



**Coffee**  
with the Principal

November 5<sup>th</sup>  
 8:00am  
 Auditorium

**ALL PARENTS INVITED**



## TOLUCA LAKE ELEMENTARY

### Reminders:

- Main gate opens at 7:15am
- Line-up bell rings at 7:45am (**all students** are expected to be here by 7:45am)
- Tardy bell rings at 7:50am (students are expected to be in their seat by 7:50am)
- Gate closes at 7:50am (late students are to enter thru main office)
- Any student not in his/her seat by 7:50am is considered tardy

**Parents and families: thank you for your assistance in helping your child develop this very important life skill of always being on-time.**

## Monthly Attendance Incentives

To help encourage perfect attendance and arriving on-time, Toluca Lake is offering both weekly and monthly incentives.

\* Students with perfect attendance will have a chance to win a LA Clippers backpack - 5 students each week.

\*\* Students with perfect attendance will have a chance to win a pizza - 3 students each month.

Help Your Child Succeed in School:  
**Build the Habit of Good Attendance Early**  
School success goes hand in hand with good attendance!

### DID YOU KNOW?

- Starting in kindergarten, too many absences can cause children to fall behind in school.
- Missing 10 percent (or about 18 days) can make it harder to learn to read.
- Students can still fall behind if they miss just a day or two days every few weeks.
- Being late to school may lead to poor attendance.
- Absences can affect the whole classroom if the teacher has to slow down learning to help children catch up.

Attending school regularly helps children feel better about school—and themselves. Start building this habit in preschool so they learn right away that going to school on time, every day is important. Good attendance will help children do well in high school, college, and at work.

\*\*\* Parents of students with perfect attendance will be eligible to win a \$10 gift card - 3 families each month.

**So let's work together to improve our daily and on-time attendance!**

## Parent Conference Week

\* **Nov.18th - 22nd** \*  
Early **1:34pm**  
**Dismissal All Week**

All this information and more is always posted on the school website

<http://toluca.weebly.com>

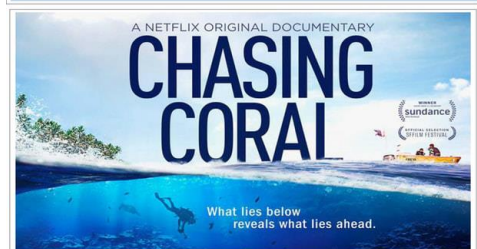
## TL Book Fair

Nov. 4-8 - Recess & Lunch  
in the Library

Nov. 5 @ 7:15am-8:00am  
**Special book fair time for  
parents and families**



Toluca Lake Elementary School's  
2<sup>nd</sup> Annual Family Science Night  
Featuring a Free Screening of the Award-Winning Film  
6:00 PM – Thursday, November 14



ATTENTION ALL TOLUCA LAKE STUDENTS & FAMILIES:  
COME TO THIS SPECIAL EVENING FULL OF SCIENCE,  
ACTIVITIES, REFRESHMENTS, FILM, DISCUSSION, & FUN!

FAMILY SCIENCE EVENING  
TOLUCA LAKE ELEMENTARY AUDITORIUM  
6:00 PM - THURSDAY, NOVEMBER 14